

KEY PLAN

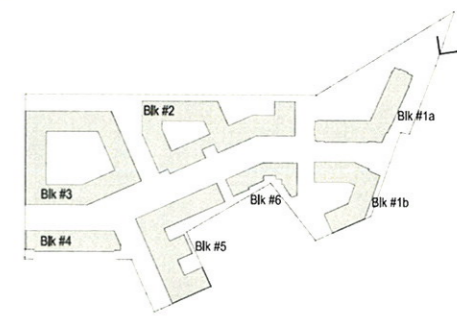
MRP REALTY

680 Rhode Island Ave. | Washington, DC

Perspective

July 13, 2015 | 1.201

ZONING COMMISSION
 District of Columbia
 CASE NO.15-16
 EXHIBIT NO.2A9



KEY PLAN

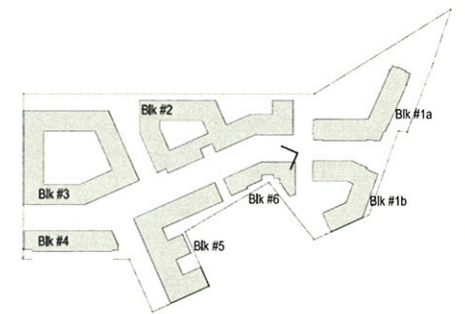
MRP REALTY

680 Rhode Island Ave. | Washington, DC

July 13, 2015 | 1.202

SK+I
ARCHITECTURE

Perspective



KEY PLAN

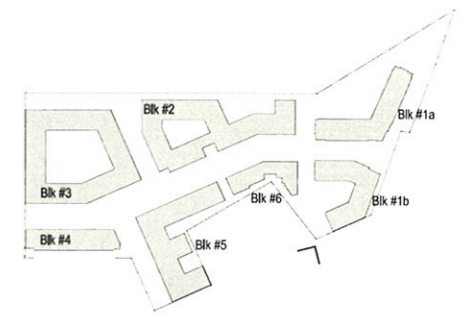
MRP REALTY

680 Rhode Island Ave. | Washington, DC

July 13, 2015 | **1.203**

SK+I
ARCHITECTURE

Perspective



KEY PLAN

MRP REALTY

680 Rhode Island Ave. | Washington, DC

July 13, 2015 | 1.204

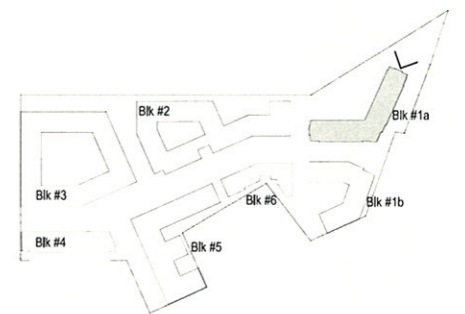
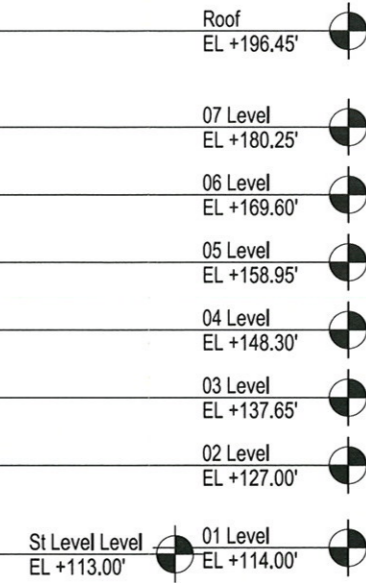
SK+I
ARCHITECTURE

Perspective

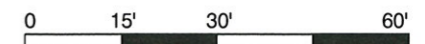


MATERIALS

- 1. Brick 1
- 2. Brick 2
- 3. Metal Balcony
- 4. Metal Channel
- 5. Metal Panel 1
- 6. Metal Panel 2
- 7. Metal Railing
- 8. Metal Window 1
- 9. Metal Window 2
- 10. Precast Stone 1
- 11. Precast Stone 2
- 12. Stone



KEY PLAN



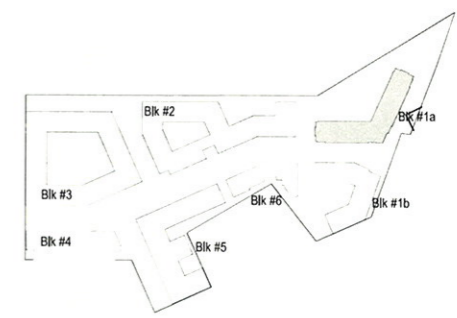


- MATERIALS**
1. Brick 1
 2. Brick 2
 3. Metal Balcony
 4. Metal Channel
 5. Metal Panel 1
 6. Metal Panel 2
 7. Metal Railing
 8. Metal Window 1
 9. Metal Window 2
 10. Precast Stone 1
 11. Precast Stone 2
 12. Stone



Retail Option

Signage Canopy Area



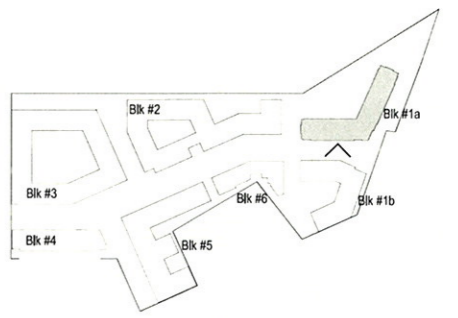
KEY PLAN



MATERIALS

- 1. Brick 1
- 2. Brick 2
- 3. Metal Balcony
- 4. Metal Channel
- 5. Metal Panel 1
- 6. Metal Panel 2
- 7. Metal Railing
- 8. Metal Window 1
- 9. Metal Window 2
- 10. Precast Stone 1
- 11. Precast Stone 2
- 12. Stone

Roof	EL +196.45'
07 Level	EL +180.25'
06 Level	EL +169.60'
05 Level	EL +158.95'
04 Level	EL +148.30'
03 Level	EL +137.65'
02 Level	EL +127.00'
01 Level	EL +114.00'
St Level	EL +113.00'



KEY PLAN

MRP REALTY

680 Rhode Island Ave. | Washington, DC

July 13, 2015 | 1.223



Block 1A -South Elevation

